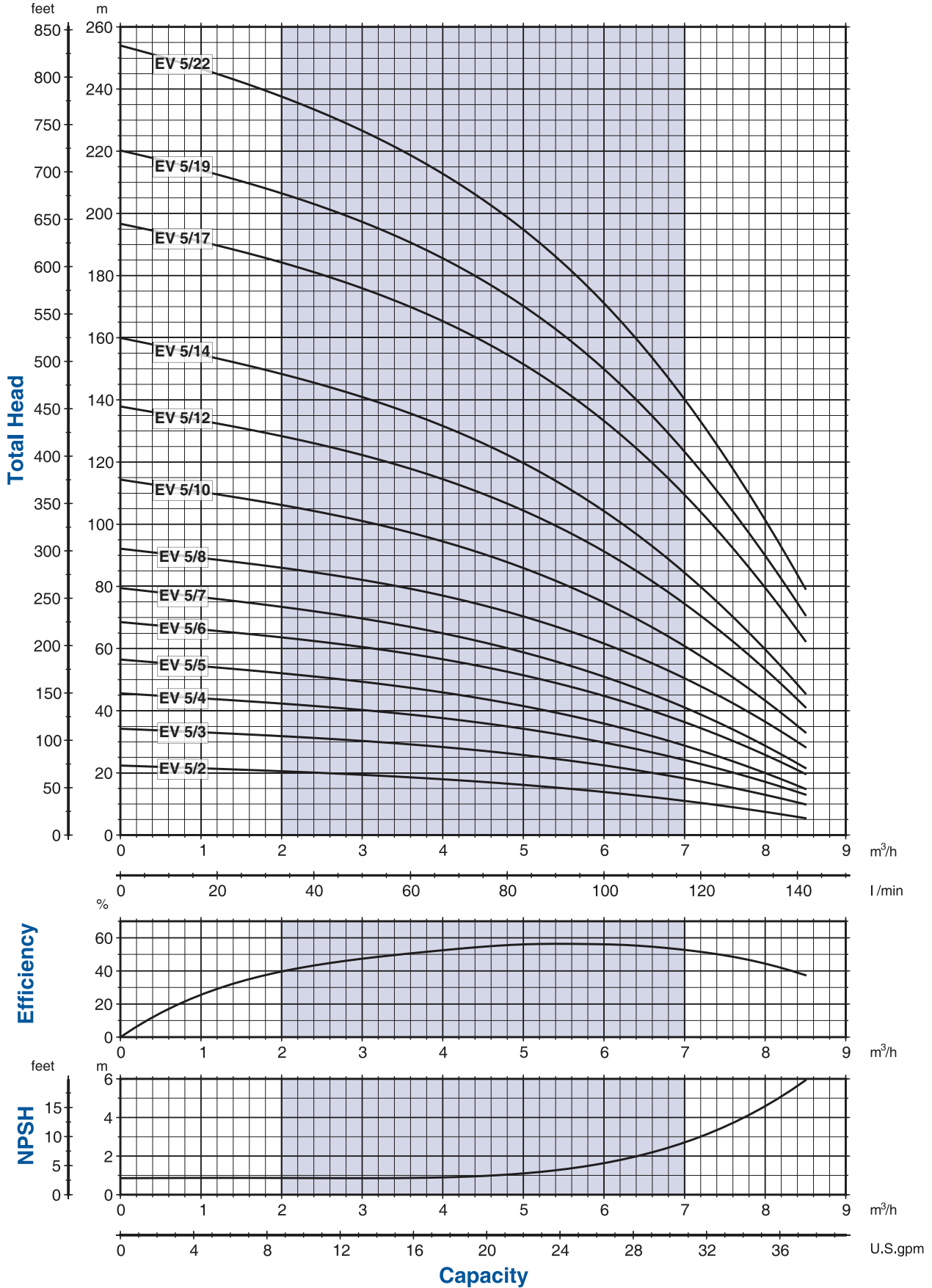


Performance curves 50Hz



00110040 07/2008

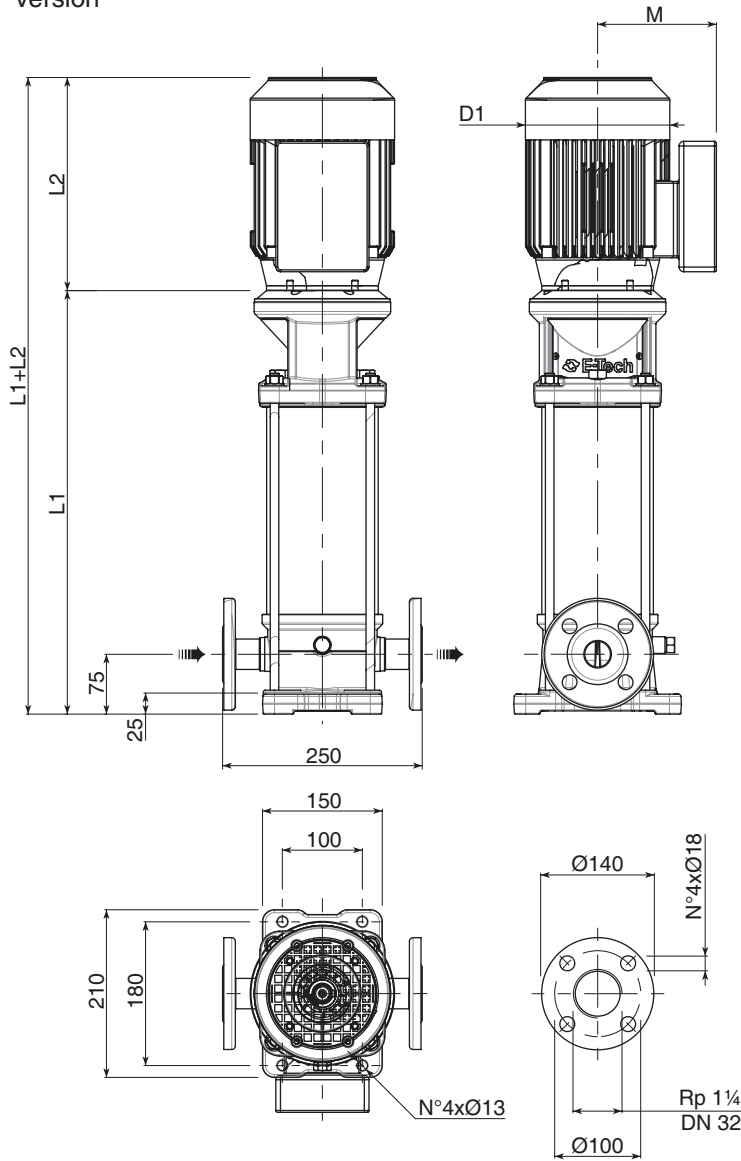
The hydraulic characteristics are guaranteed, according to ISO standard 9906, Annex A, grade 2.



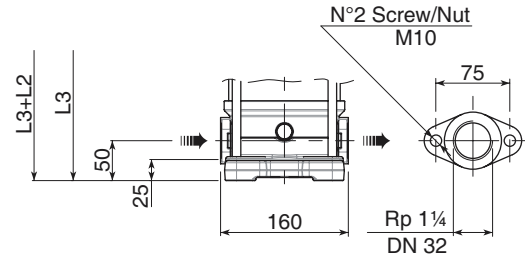
by Franklin Electric

It is our policy to continuously develop and improve our products, therefore, we reserve the right to amend specifications without prior notice.

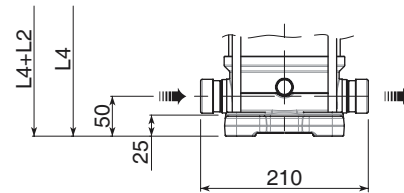
F version



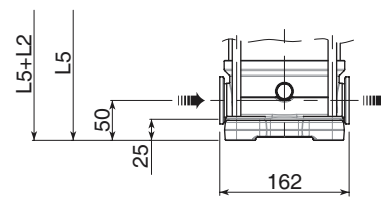
T version



V version



C version



00114014_05/2009

F version Round flanges on body type PN25: the pump is supplied with joints and bolts without counterflanges (Optional accessories).

T version Oval flanges on body type PN16: the pump is supplied without oval counter flanges for pipe to be screwed, joints and bolts (Optional accessories).

V version Connections with rapid fittings type "Victaulic": the pump is supplied without the collars (Optional accessories).

C version Connections with round fittings type Clamp-FlexiClamp: the pump is supplied without collars (Optional accessories).

Pump Model	Motor		Dimensions (mm)					Weight						
	kW	Size	L1 F	L2		L3 T	L4 V	L5 C	M		D1		Pump	Electric Pump
EV 5/2	0.55	71	328.5	215	215	303.5	303.5	303.5	129	112	142	142	15.5	21.5
EV 5/3	0.75	80	352.5	232	232	327.5	327.5	327.5	150	129	160	160	16	25.5
EV 5/4	1.1	80	376.5	232	232	351.5	351.5	351.5	150	129	160	160	16.5	28
EV 5/5	1.1	80	400.5	232	232	375.5	375.5	375.5	150	129	160	160	17	28.5
EV 5/6	1.5	90	435	267	267	410	410	410	160	138	180	180	18	32
EV 5/7	1.5	90	459	267	267	434	434	434	160	138	180	180	19	33
EV 5/8	2.2	90	483	267	267	458	458	458	160	138	180	180	19.5	35.5
EV 5/10	2.2	90	531	267	267	506	506	506	160	138	180	180	20.5	36.5
EV 5/12	3	100	589	-	306	564	564	564	-	145	-	196	22.5	45.5
EV 5/14	3	100	637	-	306	612	612	612	-	145	-	196	24	47
EV 5/17	4	112	709	-	328	-	684	684	-	161	-	225	25.5	59
EV 5/19	5.5	132	779.5	-	362	-	754.5	754.5	-	195	-	248	32	78
EV 5/22	5.5	132	851.5	-	362	-	826.5	826.5	-	195	-	248	33.5	79.5

• Standard efficiency motors IE1