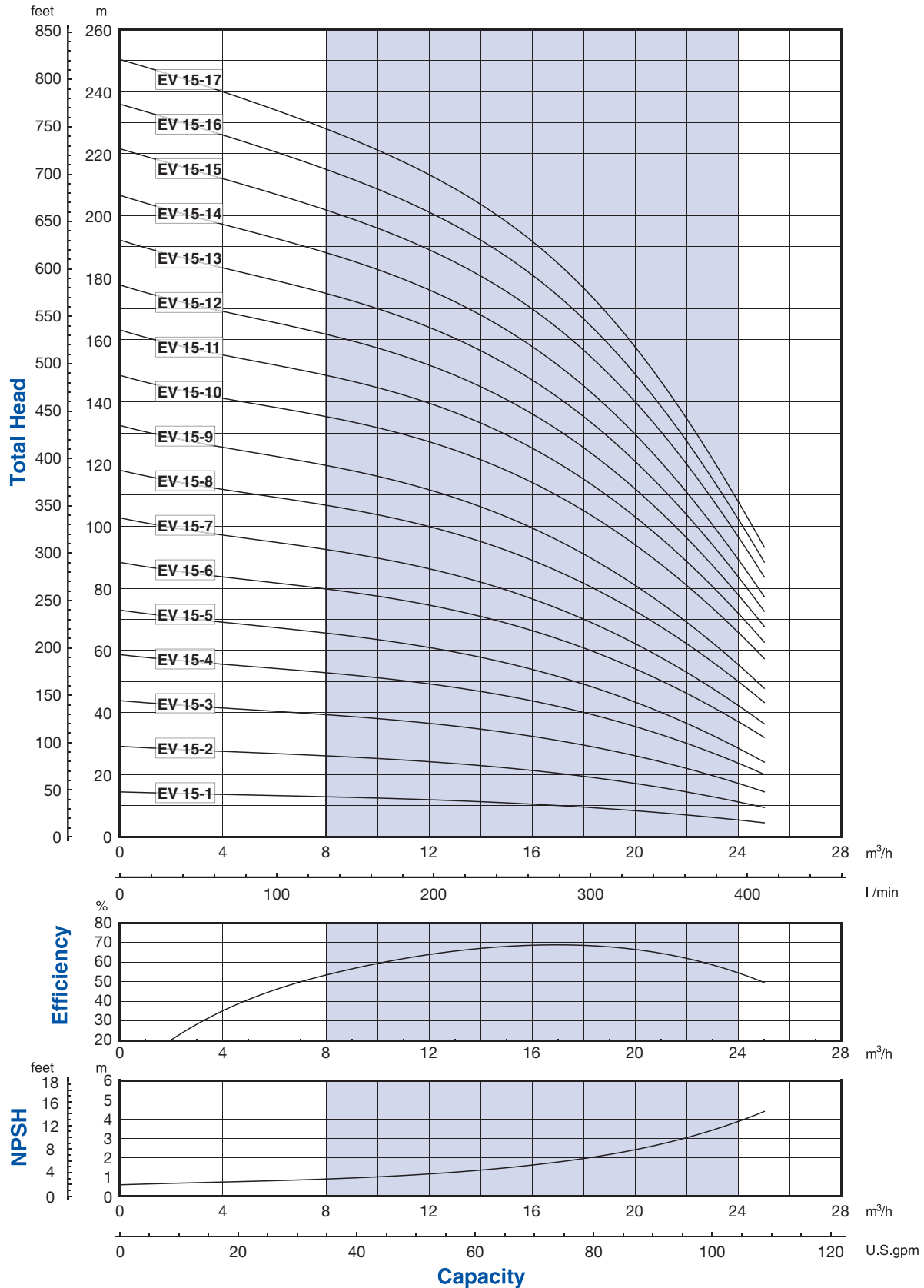


## Performance curves 50Hz

MEI ≥ 0,70



00110090 11/2013

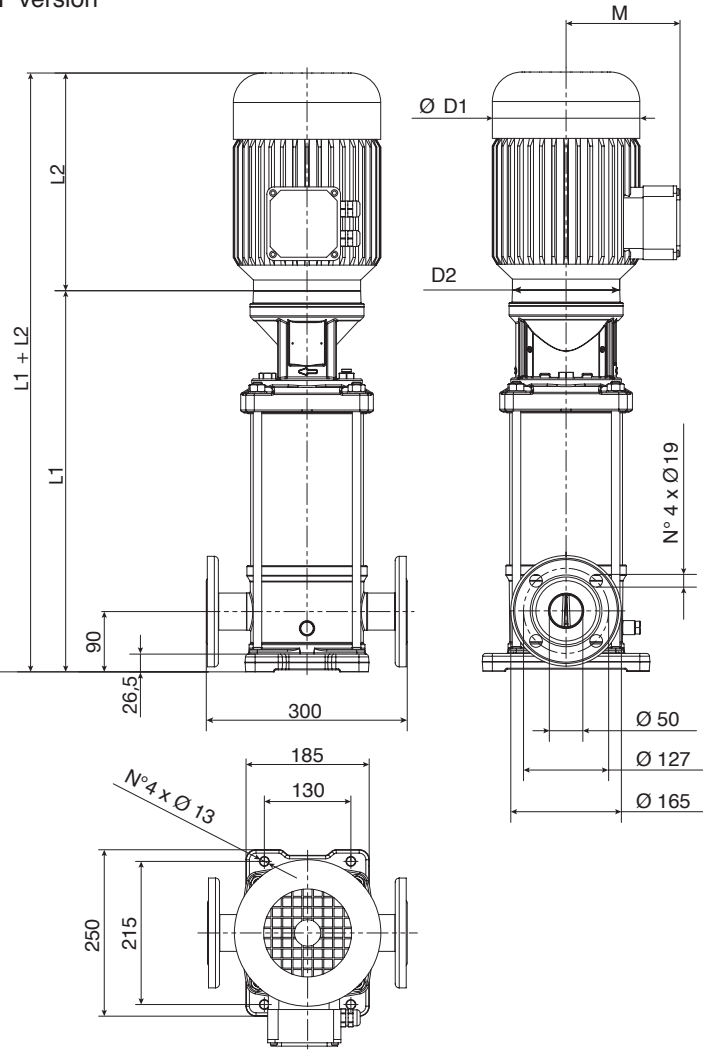
The hydraulic characteristics are guaranteed, according to ISO standard 9906, grade 3.

It is our policy to continuously develop and improve our products, therefore, we reserve the right to amend specifications without prior notice.

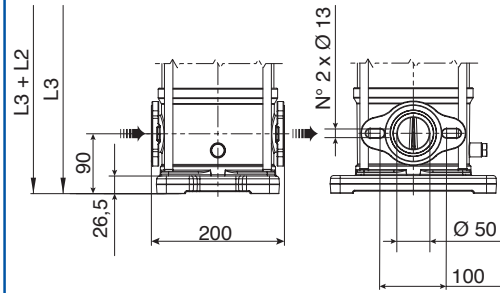


## Technical data 50Hz

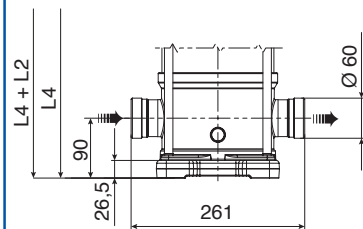
F version



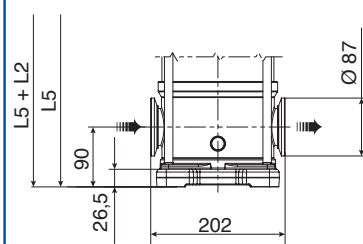
T version



V version



C version



F version Round flanges on body type PN25: the pump is supplied without counterflanges (Optional accessories, including bolts and joints).

T version Oval flanges on body type PN16: the pump is supplied without threaded oval counter flanges (Optional accessories, including bolts and joints).

V version Connections with rapid fittings type "Victaulic": the pump is supplied without the collars (Optional accessories).

C version Connections with round fittings type Clamp-FlexiClamp: the pump is supplied without collars (Optional accessories).

Pump Model	Motor		Dimensions (mm)										Weight		
	kW	Size	L1 F	L2		L3 T	L4 V	L5 C	M		D1		D2	Pump	Electric Pump
EV 15/1	1,1	80	405	1-PHASE 232	3-PHASE 232	232	232	232	150	129	160	160	170	23,5	35,5
EV 15/2	2,2	90	415	267	267	267	267	267	160	138	180	180	170	25	41
EV 15/3	3	100	473	-	267	267	267	267	-	138		180	170	27	45,7
EV 15/4	4	112	521	-	306	306	306	306	-	145		196	170	28,5	51,3
EV 15/5	4	112	569	-	306	306	306	306	-	145		196	170	30	52,8
EV 15/6	5,5	132	804	-	328	328	328	328	-	161		225	300	52	86
EV 15/7	5,5	132	852	-	328	328	328	328	-	161		225	300	53	87
EV 15/8	7,5	132	900	-	350	350	350	350	-	161		225	300	54,5	90,5
EV 15/9	7,5	132	948	-	350	350	350	350	-	161		225	300	56	92
EV 15/10	11	160	1016	-	425	425	425	425	-	198		248	350	60	118
EV 15/11	11	160	1064	-	425	-	425	425	-	198		248	350	61,5	119,5
EV 15/12	11	160	1112	-	425	-	425	425	-	198		248	350	63	121
EV 15/13	11	160	1160	-	425	-	425	425	-	198		248	350	64,5	122,5
EV 15/14	11	160	1208	-	425	-	425	425	-	198		248	350	66	124
EV 15/15	15	160	1256	-	476	-	476	476	-	198		248	350	67	131
EV 15/16	15	160	1304	-	476	-	476	476	-	198		248	350	68,5	132,5
EV 15/17	15	160	1352	-	476	-	476	476	-	198		248	350	70	134

00114095 05/2014

# EV 15-20

## TABLE OF HYDRAULIC PERFORMANCES AT 50Hz

PUMP TYPE	RATED POWER		Q = DELIVERY																								
	kW	HP	l/min	25	33	42	50	58	67	75	83	90	100	117	133	167	200	233	266	300	333	367	400	433,5	466,5		
			m <sup>3</sup> /h	1.5	2	2.5	3	3.5	4	4.5	5	5.4	6	7	8	10	12	14	16	18	20	22	24	26	28		
H = TOTAL HEAD METERS COLUMN OF WATER																											
EV 15/1	1,1	1,5	14,5																								
EV 15/2	2,2	3	29																								
EV 15/3	3	4	43,5																								
EV 15/4	4	5,5	58																								
EV 15/5	4	5,5	72,5																								
EV 15/6	5,5	7,5	87,5																								
EV 15/7	5,5	7,5	102																								
EV 15/8	7,5	10	117																								
EV 15/9	7,5	10	131,5																								
EV 15/10	11	15	147,5																								
EV 15/11	11	15	162																								
EV 15/12	11	15	176,5																								
EV 15/13	11	15	191																								
EV 15/14	11	15	205,5																								
EV 15/15	15	20	221																								
EV 15/16	15	20	235,5																								
EV 15/17	15	20	249,5																								
EV 20/1	1,1	1,5	15,5																								
EV 20/2	2,2	3	31																								
EV 20/3	4	5,5	46,5																								
EV 20/4	5,5	7,5	62,5																								
EV 20/5	5,5	7,5	78																								
EV 20/6	7,5	10	94,5																								
EV 20/7	7,5	10	110																								
EV 20/8	11	15	126,5																								
EV 20/9	11	15	142,5																								
EV 20/10	11	15	158																								
EV 20/11	15	20	174																								
EV 20/12	15	20	189,5																								
EV 20/13	15	20	205																								
EV 20/14	15	20	220,5																								
EV 20/15	18,5	25	237																								
EV 20/16	18,5	25	252,5																								
EV 20/17	18,5	25	268																								